



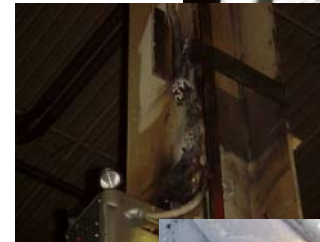
*Small trash fire occurred in the structure during selective demolition*



*Items cut during Demolition causing soot*



*Over 1000 Small fires*



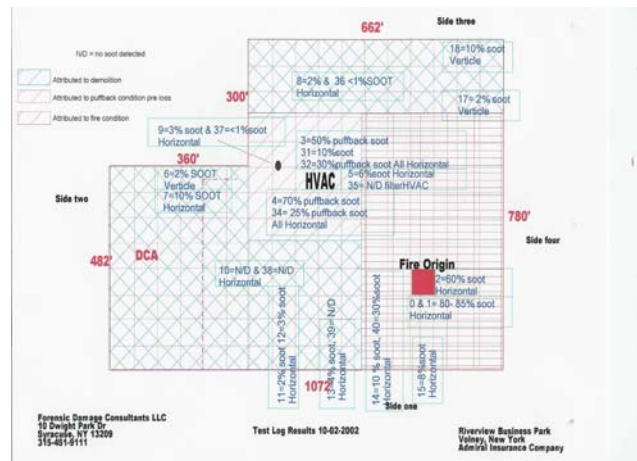
*During selective demolition*



*Forensic Damage Consultants LLC was assigned by the carrier to determine the damage caused by a small refuse fire in an industrial building that was under selective interior demolition. During the course of investigation it was discovered that the contractor on site was using an acetylene torch to cut items. This caused over 1000 fires that were extinguished in their incipient stage. However this caused a build up of soot unrelated to the loss.*

*Forensic Damage Consultants LLC took over 100 soot samples. These were sent to a laboratory for analysis. Forensic Damage Consultants LLC was able to determine the cause of soot in each area of the structure. A map was prepared as well as a cost of remediation to the area affected by the refuse fire.*

*The use of our protocols helped settle the loss, while producing results related specifically to the cause of loss.*



*Soot trace map prepared after lab test by Forensic Damage Consultants LLC*